

# High Efficiency Centrifugal Oil Separator

Oil Controls

The High Efficiency Centrifugal Oil Separator is used in ultra-low temperature systems with long refrigerant lines or inherent oil return problems. It is also used on multiple compressor racks for supermarkets and air conditioning systems for use with CFCs, HCFCs, HFCs, and their lubricants. Suitable for use with R-410A.



## Features

- Internal oil collection screen
- Hermetic welded or accessible bolted flange construction
- Corrosion resistant epoxy powder paint
- High efficiency (99%) centrifugal separation
- R-410A pressure rated

## Specifications

- Maximum working pressure: 450 psi - flanged models\*  
600 psi - welded models\*
- UL/CUL file number: SA8547

## Nomenclature example: A-FC 8241717H

A	F	C	8	24	17	17	H
Series	F = Flanged W = Welded	Centrifugal	Diameter (in)	Length (in)	Inlet Connection in 1/8"	Outlet Connection in 1/8"	5" Legs Standard H = 10" Legs

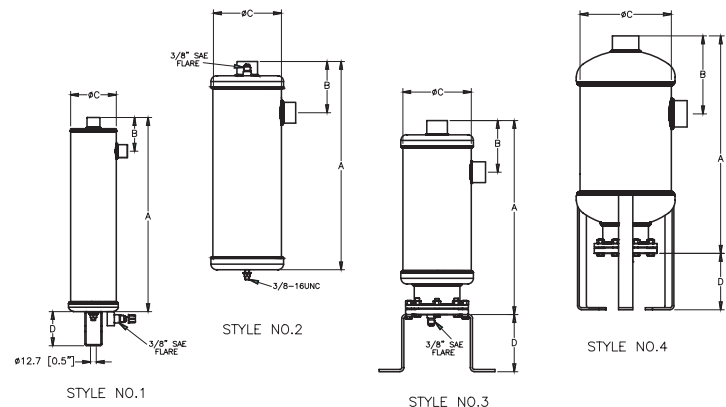
## Replacement Parts

PCN	Part	Contains
065847	Float Assembly Kit*	Flange w/intergral float ass'y and flange gasket
065849	Gasket Kit	Flange gasket

\*Repairs AC & R series S1900 Standard and 5200 Helical Oil Separators

## Ordering Information

PCN	Description	Solder Connection Size	Dimensions			
			A	B	C	D
065895*	A-WC 41777	7/8	17.01	2.95	4.00	2.95
065896*	A-WC 41999	1 1/8	19.02	3.07		
066094*	A-WC 6181111	1 3/8	18.26	4.05	6.0	
066095*	A-WC 6181313	1 5/8		4.63		
066096*	A-WC 6181717	2 1/8	18.38	4.76	6.0	
065930	A-FC 6221111	1 3/8	17.00	3.94		
065931	A-FC 6221111H			4.53	5.00	
065362	A-FC 6221313	1 5/8	17.00	4.53	6.0	10.00
065932	A-FC 6221313H					
065933	A-FC 6221717	2 1/8	17.13	4.65	8.0	10.00
065934	A-FC 6221717H					
065276	A-FC 8241717	2 5/8	19.06	6.83	8.0	10.00
065935	A-FC 8241717H					
065936	A-FC 10272121	3 1/8	25.10	7.05	12.00	10.00
065937	A-FC 10272121H					
065938	A-FC 12302525H					



## Capacity Table

Description	Solder Connection Size (ODF)	Style Number	Shell O.D.	Maximum Capacity of Refrigeration at Evaporator Temperature																Discharge Maximum CFM	Oil Pre-Charge Amount (oz.)	Replaceable Float PCN
				R-134a /R-450A/R-513A				R-22/407C/ R-448A/R-449A				R404A/507				R-410A						
				-40F		+40F		-40F		+40F		-40F		+40F		-40F		+40F				
				Tons	kW	Tons	kW	Tons	kW	Tons	kW	Tons	kW	Tons	kW	Tons	kW	Tons	kW			
A-WC 41777	7/8"	1	4"	5.1	18.1	6.3	22.1	7.4	26.2	8.9	31.2	7.1	25.0	9.4	32.9	12.2	42.8	13.8	48.3	6.74	17	N/A
A-WC 41999	1 1/8"			8.8	31.0	10.8	38.0	12.8	44.9	15.2	53.6	12.2	42.8	16.1	56.4	20.9	73.4	23.7	83.3	11.55		
A-WC 6181111	1 3/8"	2	6"	12.2	42.8	14.9	52.4	17.6	61.9	21.0	73.9	16.8	15.1	22.1	77.9	28.8	101.2	32.7	114.9	15.94	21	065847
A-WC 6181313	1 5/8"			18.7	65.6	22.8	80.3	27.0	94.8	32.2	113.2	25.8	90.6	33.9	119.3	44.1	155.1	50.1	176.0	24.42		
A-WC 6181717	2 1/8"		6"	23.9	84.0	29.2	102.8	34.5	121.4	41.2	145.0	33.0	116.0	43.5	152.8	56.5	198.6	64.1	225.4	31.26		
A-FC 6221111	1 3/8"	3	6"	12.2	42.8	14.9	52.4	17.6	61.9	21.0	73.9	16.8	15.1	22.1	77.9	Not Available				15.94	21	065847
A-FC 6221111H																						
A-FC 6221313	1 5/8"			18.7	65.6	22.8	80.3	27.0	94.8	32.2	113.2	25.8	90.6	33.9	119.3					24.42		
A-FC 6221313H					23.9	84.0	29.2	102.8	34.5	121.4	41.2	145.0	33.3	116.0	43.5	152.8				24.42		
A-FC 6221717	2 1/8"	3	6"	23.9	84.0	29.2	102.8	34.5	121.4	41.2	145.0	33.3	116.0	43.5	152.8					31.26		
A-FC 6221717H																					31.26	
A-FC 8241717	2 5/8"	4	8"	29.1	102.3	35.6	125.1	42.0	147.8	50.2	176.5	40.1	141.2	52.9	186.1					38.06		
A-FC 8241717H																					38.06	
A-FC10272121	3 1/8"	4	10"	50.5	177.5	61.7	217.1	72.9	256.5	87.1	306.3	69.7	245.0	91.8	322.8					66.05		
A-FC 10272121H																					66.05	
A-FC 12302525H			12"	67.9	238.9	83.1	292.1	98.1	345.2	117.2	412.2	93.7	329.7	123.5	434.4					88.87		N/A